

BOUNCE
Marketing|Exhibits

Portable Options Catalog

Portable Options – 10'

Model # FM10_VC6

State-of-the-art 50mm aluminum tube with internal spigot connectors. Supports monitor up to 37", max 40 lbs.

Kit Includes: (1) frame, (1) dye-sublimated pillowcase zipper graphic, (1) monitor mount (LED screen not included), and (1) wheeled OCH2 shipping case.

Assembled Dimensions: 114"W x 92"H x 33.5"D

Purchase Price - \$2350.00 **



SIDE VIEW



FRONT VIEW



TOP VIEW

Portable Options – 10'

Model # FM10_VC7

State-of-the-art 30mm aluminum tube frame with snap button backwall assembly and expanding spigot ladder connection. Features a 34" wide counter available in four laminate color options, Hardware mounts for a medium sized monitor, max 36" / 40 lbs.

Kit Includes: (1) frame, (1) dye-sublimated pillowcase zipper graphic, (1) stand-off monitor mount (LED screen not included), (1) countertop, and (1) wheeled OCL and (1) OCH2 shipping case.

Assembled Dimensions: 114.07"W x 92.41"H x 48.03"D

Purchase Price - \$2175.00 **



SIDE VIEW



FRONT VIEW



TOP VIEW

Portable Options – 10'

Model # FM10_HC6

State-of-the-art 30mm aluminum tube frame with snap button assembly, features a 34" wide counter available in four laminate color options, Hardware mounts for a medium sized monitor, max 36" / 40 lbs.

Kit Includes: (1) frame, (1) dye-sublimated pillowcase zipper graphic, (1) stand-off monitor mount (LED screen not included), (1) countertop, (1) wheeled molded OCL and (1) OCH2 storage case.

Assembled Dimensions: 112.06"W x 92.57"H x 43.41"D

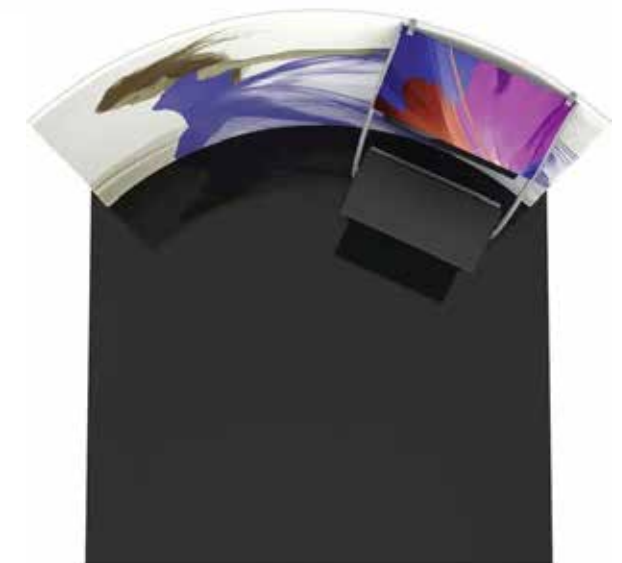
Purchase Price - \$2150.00 **



SIDE VIEW



FRONT VIEW



TOP VIEW

Portable Options – 10'

Model # DS10_kit 06

Premium aluminum tube frames with snap button / spigot assembly,
Weighted feet for added stability, (2) zipper pillowcase fabric graphics.

Kit Includes: Monitor kiosk featuring (1) medium monitor mount (LED screen not included), Holds (1) 32-55" monitor / max weight 40lbs.

Assembled Dimensions: 116.76"W x 98.62"H x 35.59"D

Purchase Price - \$3275.00 **



SIDE VIEW



FRONT VIEW



TOP VIEW

Portable Options – 10'

Model # Hop10_BLstraight

Lightweight 10 ft wide (4 quad x 3 quad) straight anodized silver frame, grey in-molded hook and loop end caps, supports (1) integrated backlit textile fabric graphic with endcaps, (1) rear diffuser graphic panel included, LED lights easily attach to the collapsible frame, (1) molded, wheeled OCX case, lifetime hardware warranty against manufacturer defects on frame, and lights have a one-year limited warranty.

Assembled Dimensions: 119"W x 90"H x 29"D

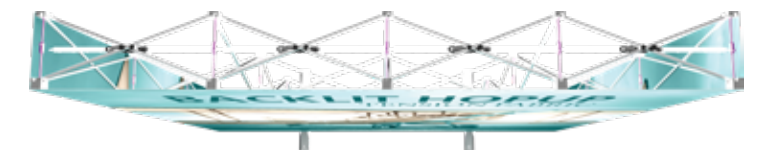
Purchase Price - \$2275.00 **



SIDE VIEW



FRONT VIEW



TOP VIEW

Portable Options – 10'

Model # FE10_straight

10ft Straight Fabric Display has sturdy aluminum frame, sets up easily and custom pillowcase graphics quickly slide over the frame and zip up. A one-year warranty is included for the hardware, and the display comes with a canvas carry bag for transportation purposes.

Purchase Price - \$995.00 **



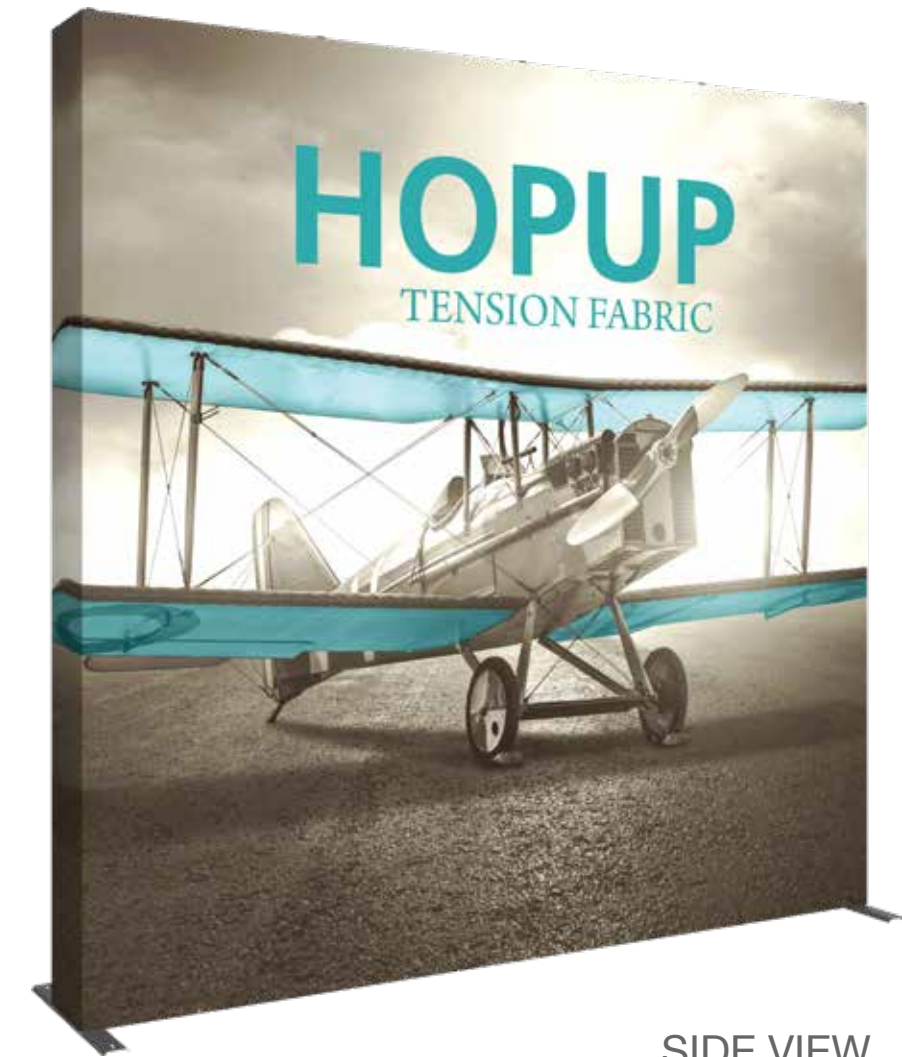
Portable Options – 10'

Model # HOP10_straight

Lightweight 10ft wide (4 quad x 3 quad) straight anodized silver frame, grey in-molded hook and loop end caps, (2) stabilizer feet included, supports an integrated fabric graphic mural with or without endcaps, easy assembly, (1) rolling carry bag included, and lifetime hardware warranty against manufacturer defects.

Optional wheeled hard molded OC-HOP or OCX cases available. Compatible with optional LED lighting.

Purchase Price - \$1175.00 **



SIDE VIEW



FRONT VIEW



TOP VIEW

Portable Options - 20'

Model # FD20_kit 02

Premium aluminum tube frames with snap button/spigot assembly, easy to store and ship.

Kit Includes: Weighted feet for added stability, (2) zipper pillowcase fabric graphics. Center wall features extrusion frame, LED lights and push-fit fabric graphics.

Assembled Dimensions: 230"W x 96"H x 40"D

Purchase Price - \$5600.00 **



SIDE VIEW



FRONT VIEW



TOP VIEW

Portable Options - 20'

Model # FD20_kit 01

Premium aluminum tube frames with snap button/spigot assembly, easy to store and ship.

Kit Includes: Weighted feet for added stability and (1) zipper pillowcase fabric graphic.

Assembled Dimensions: 226.4"W x 96"H x 29.33"D

Purchase Price - \$4100.00 **



SIDE VIEW



FRONT VIEW



TOP VIEW

Portable Options - 20'

Model # FM20_WSC2

State-of-the-art 50mm aluminum tubing with heavy duty internal spigot connectors, features a 34" wide counter available in (4) laminate color options, hardware mounts for a medium sized monitor, max 36"/max weight 40 lbs,

Kit Includes: (1) frame, (1) dye-sublimated zipper pillowcase graphic, (1) ladder with rigid graphics, (1) counter and monitor mount, and (3) storage/shipping cases, (1) stand-off monitor mount (LED screen not included) with (1) counter 37.4"W x 92.4"H x 29.4"D, counter dimensions: 34.685"L x 16.6"W

Assembled Dimensions: 226.02"W x 93.18"H x 34.78"D

Purchase Price - \$3900.00 **



SIDE VIEW



FRONT VIEW



TOP VIEW

Portable Options - 20'

Model # Hop20_straight

Hopup™ 20ft wide (8 quad x 3 quad) straight full height tension fabric display is a simple, versatile, and easy to set up display. Hopup 8x3 Straight features a lightweight, collapsible, durable aluminum frame and pre-applied hook and loop fabric graphics with or without endcaps. Simply pop (expand) the frame and you have a perfect full height display; no tools are required for assembly! (1) wheeled carry bag for storage and transport is included.

Assembled Dimensions: 235.43"W x 90"H x 29"D

Purchase Price - \$1800.00 **



SIDE VIEW



FRONT VIEW



TOP VIEW

Portable Options - 20'

Model # VF20_straight_07

Vector Frame fabric banner is a modern, 20ft wide extrusion-based fabric display. The 2" aluminum extrusion frame is easy to assemble and disassemble and comes with the choice of one large, seamless single-sided or double-sided push-fit SEG fabric graphic.

Assembled Dimensions: 236.5"W x 94.74"H x 19.69"D

Purchase Price - \$2975.00 **



SIDE VIEW



FRONT VIEW



TOP VIEW

Portable Disclaimer

**

Graphic concept, design and layout of fabric graphics is optional.

Show services coordination and implementation is optional.

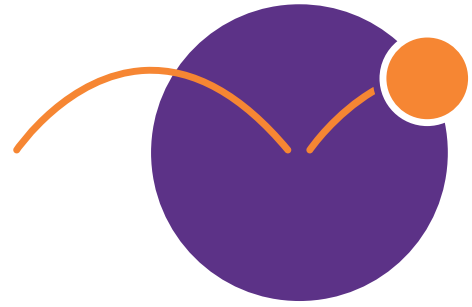
Prices subject to change.

Rental options available on some models.

Excludes applicable sale tax.

Excludes shipping charges from vendor to client.

Optional hard shipping cases optional on some models.



BOUNCE
Marketing|Exhibits

Let's work together
